

Company Profile



DGCRANE (Xinxiang Degong Machinery Co., Ltd) is a trusted professional overhead crane manufacturer located in Changnao Industrial Park, Changyuan County, Henan Province, the biggest crane manufacturing base in China. Specialized in the crane design and manufacturing, we have passed ISO 9001:2000, CE, SGS certification.

Ever since established, it brings its design and products quality in line with international practice. To meet the high demands of the international guests, we successfully developed the new style overhead crane, new trolley system, new electric wire rope hoist. Many main performance parameters reach the industry advanced level.

Up to now, we have exported cranes to Russia, Uzbekistan, Philippines, Bangladesh, Australia, Qatar, Tanzania, Singapore, Saudi Arabia, Pure, Brazil, and Nigeria and etc. Many clients all over the world, even the best-known companies in the world, such as like Italy IMF Group (the biggest complete set of foundry equipment supplier in the world), choose us.

To make it famous brand in international overhead crane industry, there is a long way to go, we will do it!

Xinxiang Degong Machinery Co., Ltd

Address: Changnao industry Zone, Xinxiang city, Henan province, China
Email: sales@dgcrane.com Tel: +86-373-3876188 Fax: +86-373-3876088
Web: www.dgcrane.com

Sales Service Network



Asia India, Indonesia, Malaysia, Philippines, Singapor, Tailand, UAE, Kazakhstan, Iraq, Qatar Bangladesh, Pakistan, Saudi Arabia, Malaysia, Sri Lanka etc.

Europe Netherlands, Russia, Ukraine, Germany, England Estonia, Norway, Sweden etc.

South America Nicaragua, Peru, Brazil, Columbia, Bolivia, Ecuador, Chile, Argentina etc.

North America America, Mexico, Canada etc.

Africa Nigeria, Tanzania, South Africa, Algeria, Kenya, Egypt, Zambia etc.

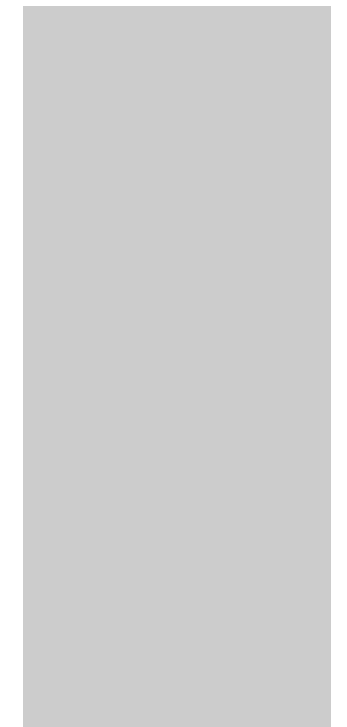
Oceania Australia, New Zealand etc.

Electric hoist Single girder overhead crane



Electric hoist Single girder overhead crane is improved and designed on the basis of LD model. It is characterized by more reasonable structure and higher strength steel as a whole. Used together with CD1 model, MD1, HC model electric hoist as a complete set, it is light duty crane with a capacity of 1 to 20 tons. The span is 7.5 to 31.5 meter. Working grade is A3-A5. Working temperature is -25°C to 40°C.

Capacity (T)	1,2,3,5,10T					16,20T					
Span(M)	7.5~31.5M										
Overhead crane travelling mechanism	Travelling speed(m/min)	20	30	45	60	75	20	30	45	60	75
	Reducer ratio	58.78	39.38	26.36	19.37	15.88	58.78	39.38	26.36	19.37	15.88
	Motor	Model	ZDY21-4		ZDY21-4		ZDY122-4	ZDY131S-4		ZDY112L1-4	
		Power(kw)	2×0.8		2×1.5		1.5×2	2.2×2		2.2×2	
	Rotation (m/min)	1380					1380				
Lifting mechanism (electric hoist)&electric hoist traveling mechanism	Electric hoist model	CD1/MD1					CD1/MD1/HC				
	Lifting speed (m/min)	8,8/0.8					3.5 3.5/0.35				
	Lifting height (m)	6,9,12,18,24,30					12,18,24,30				
	Travelling speed (m/min)	20(30)					20(30)				
	Motor	Taper Squirrel-cage type					Taper Squirrel-cage type				
Work duty	A3-A5										
Power supply	380V 50HZ three phase										
Wheel diameter	270mm					370mm					
Width of trail	37-70mm					37-70mm					



Double girder overhead crane

The double girder overhead crane is specialized designed according to Europe FEM manufacturing standard. The overall designing technology has reached leading level within both home and abroad. Along with reasonable and optimized design of crane structure, maximum meet the needs in strength, stiffness and stability. To fully satisfying different customer requirements, Our company takes full advantages of combining crane design with site condition, such as fabricate course, testing, transportation, installation and maintenance, possibly make every step easy and individual. In particularly, with computer optimization design box beam, low dead weight effectively reduces the cost in which workshop built with steel structure.

Double Girder Crane consists of two girders mounted on two or four end carriages depending upon the duty of the overhead crane. The end carriages are fitted with wheels that travel on the rail by LT motors.

The hoist is mounted on the trolley that travel on the upper sides of bridges on a square bar or rail.

The power supply is single phase or 3 phases depending on the duty and capacity of the crane used.

The electrical system consists of PVC Bus bar and Festoon system attached to the bridge.

We have double girder overhead crane ranges from 5000 kg to 50000 kg with lifting height from 4 m to 18m with different overhead crane duties.

LiftingCapacity T			5	10	16/3.2	20/5.0	25/5.0	32/5.0	50/10.0	
Span M			10.5-31.5							
Liftingheight M	MainHook		16	16	16	12	12/11.0	16	12	
	AuxHook				18	11	14/13	18	16	
hoist	Mainhook	A5	12.5	8.5	7.9	7.2	7.3	7.8	5.9	
		A6	15.5	13.3	13	9.7	9.8	9.5	7.8	
	Auxhook				14.5	12.7	12.7	19.5	13.2	
Speed M/min	Trolley traveling		37.2	43.8	44.6	44.6	37	42.4	38.5	
	Bridgetraveling	A5	89.8/92.3	89.8-91.9	84.7-87.6	84.7/87.6	85.5/88	74.287.6	74.6	
		A6	116.2/117.4	112.5-116.8	112.5	112.5/101.4	112/101.4	86.8-101.4	87.3	
Weight Kg	Trolley		A5	2126	3424	6227	6856	7185	10877	15425
	Total Weight		A5	12715-31405	14270-34405	19128-39428	19947-41497	20795-42796	26901-52748	35317-64880
			A6	12991-31596	14719-34699	20045-41315	20984-44225	22632-16324	28061-55272	36075-67242
Max WheelLoadKN			A5	74-125	102-160	141-205	163-231	185-255	237-327	333-450
			A6	75-126	104-162	145-211	167-239	189-263	242-335	336-457
Railrecommended	Trolley		15kg/m				43kg/m			
	Bridge		43kg/m				QU70		QU80	
PowerSource			380V50HZ 3Phaseor basedon yourrequest							



Single girder gantry crane

Single girder gantry crane Meeting Out door and light duty lifting requirement, single girder gantry crane is a good helper! Widely serving in warehouse or factory working yard, or sometimes for long workshop which can saving more cost than overhead crane. The girder can be trussed type or box type. Trussed type may take more space than box type but own a better money performance. Box type girder can make more room for trussed type and is with more durable quality.



Capacity		T	3	5	10	16	20
Operational method			Pendent line with push button /cabin				
Speed	Lifting		8,8/0.8	8,8/0.8	7,7/0.7	3.5	3.5
	Cross traveling		20	20	20	20	20
Cranetraveling	Ground	m/min	20	20	20	20	20
	Cabin		30,40	30,40	30,40	30,40	30,40
Lifting	Type /kw		ZD414/4.5	ZD141-4/7.5	ZD151-4/13	ZD151-4/13	ZD1524/18
				ZDS10.8/4.5	ZDS11.5/4.5		
Cross traveling			ZDY12-4/0.4	ZDY121-4/0.8	ZDY21-4/0.8×2	ZDY121-4/0.8×2	YZD-4/0.8×4
Cranetraveling	Ground		ZDY21-4/0.8×2	YZR132M1-6/2.2×2	YZR160M1-6/6.3×2	YZR160M1-6/6.3×2	YZR160M1-6/6.3×2
			ZDY214/1.5×2	YZR132M2-6/3.7×2		YZR160M2-6/8.5×2	YZR160M2-6/8.5×2
	Cabin		ZDR22-4/1.5×2	YZR132M2-6/3.7×2	YZR160M1-6/6.3×2	YZR160M2-6/8.5×2	YZR160M2-6/8.5×2
			ZDR24-4/2.2×2	YZR160M1-6/5.5×2		YZR160L2-6/11×2	YZR160L2-6/11×2
Electric hoist	Type		CD1/MD1	CD1/MD1	CD1/MD1	CD1	HC
Lifting height	m		6,9				
Working duty			A5				
Power supply			380V 50HZ 3phase AC				
Span	m		12,16,20,24,30				

Double girder gantry crane

MG(A) type double girder gantry crane with trolley are widely used in outdoor storage, stock grounds, railway warehouses, factory, logistics and seaport docks ect. It also can be used in special operation with various hooks.

It consists of four main parts, bridge structure, traveling mechanism, trolley and electric equipment. The bridge is welded structure of box-type girder. All movements of the crane are controlled from the cabin. Either rigid shapes of steel (angles or tees) or flexible insulated cable shall be selected to be utilized as runway conductors.

LiftingCapacity		T	10	16	20/10	32/10	36/16	50/10
Span		M	22~35m					
Speed	Main Hook Lifting	m/min	8.5	7.9	7.2	7.5	7.8	6
	Aux. Hook Lifting				10.4	10.4	10.5	10.4
	Traveling of Trolley		43.8	44.5	44.5	41.9	41.9	38.13
	Traveling of Crane		37.6/40	38/36	38/36	40	40/38	38
OperationaModel		Cabin						
WorkingDuty		A5						
PowerSupply		Three-phase A.C. 380V, 50Hz						
LiftingCapacity		T	16/3.2	20/5.0	32/8.0	50/10.0	75/20.0	
Span		M	18-35	18-35	18-35	18-35	18-35	
Max. Lifting Height	Main Hook	M	10-12	10-12	10-12	10-12	10-12	
	Aux hook		10.6-12.6	10.6-12.6	10.7-12.7	11.1-13.1	11.1-13.1	
WorkingSystem		A5						
	Hoisting	Main	15.3	15	13.2	5.9	6.25	
		Aux	22	19	17	13.2	9.28	
Speed	Tolley Travelling	m/min	44.7	44.7	38.6	36	38.9	
	Crane Travelling		30-35	34.5-32.9	52-53	45-38.6	38.5-32.6	
Weight	Trolley	t	7.1	8.1	11.7	16.8	29.4	
	Total Weight		92-142	105-148	92-142	111-156	189-245	
Max. Wheel Load			275-369	341-435	275-369	392-483	314-361	
Rail Recommended			QU70			QU80		
Power Source			380V 50HZ 3 phase					



KBK crane



KBK modular standard components referred suspension cranes KBK standard components. By suspension, tracks, turnouts, trolley, electric hoist, mobile power supply unit (Waterloo line) as well as a combination of control devices and other components. As the product simply hanging in the factory roof rack or beam can be achieved directly transported material in the air, so it is widely used in various industries for material handling areas or systems.



(1) standard line segment orbit Usage: multi-stage docking into a the monorail straight line conveyor line, can also be multi-stage docking installation into two parallel straight track for the flexible crane hoisted bigger car running track, a standard paragraph or two standard segment can also be combined into a flexible suspension crane girder parallel.

(2) standards elbow. Purpose: straight rail connection combined into a curve or ring monorail conveyor line

(3) cross-shaped fork (dial), V-type fork Uses: standard rail docking combination monorail handling network. Meet a variety of forms of process layout requirements.



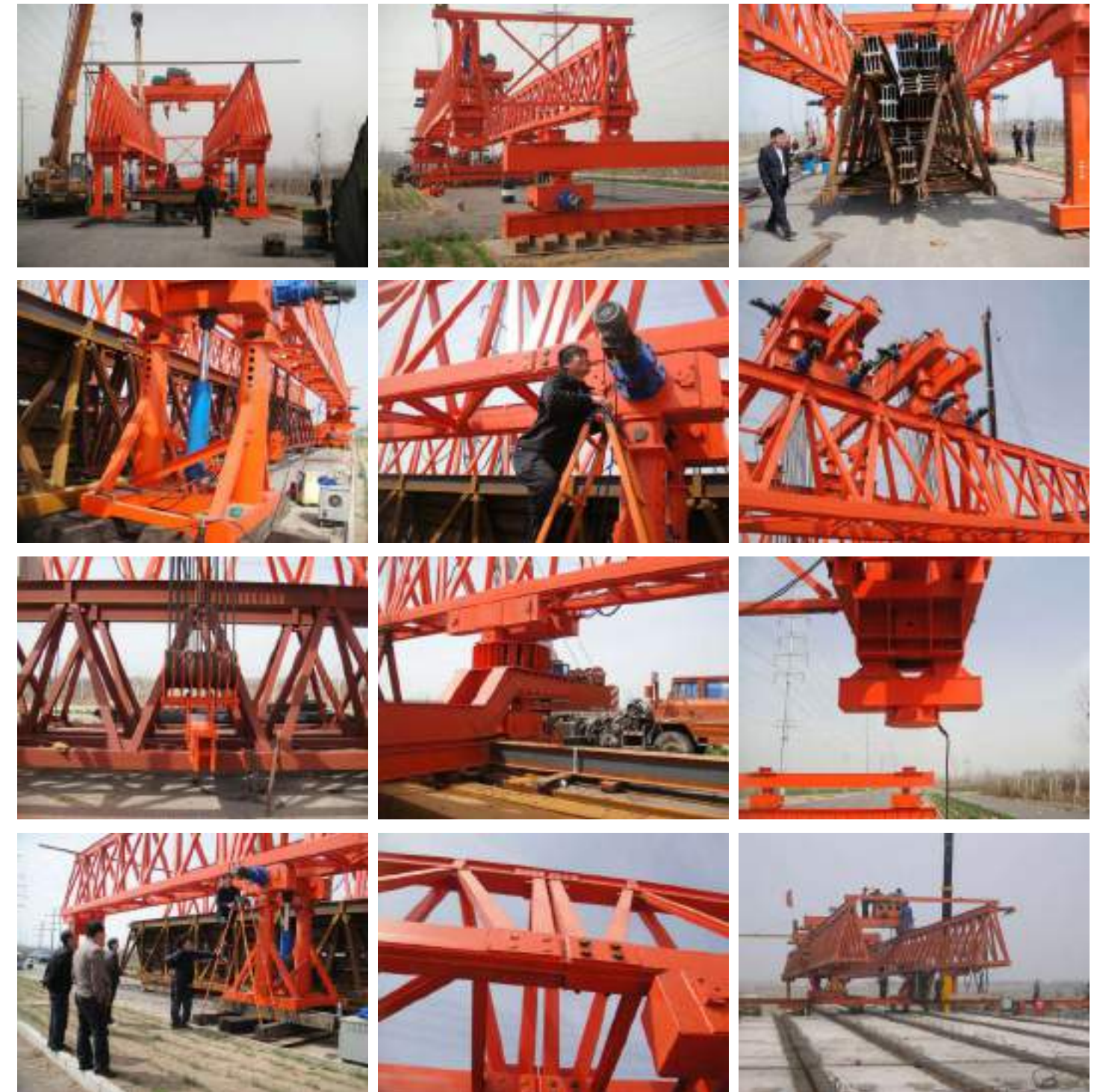
Beam launcher

Pre-cast concrete beam girders ('I', 'T', 'M' beams, etc) are most widely used for short span bridges and viaducts. The pre-cast beams are usually lifted and placed on the pier heads using cranes or other hoisting equipment from the ground below. However, for bridges crossing over water or viaducts with high piers and/or difficult ground conditions, a Beam Launcher is commonly used to lift the pre-cast beams in place. The pre-cast beams are delivered with a Beam Trolley on top of the completed deck to the rear of the Beam Launcher, and subsequently picked up by the Launcher for placing into the final position.

There are 2 types of Beam Launchers---the single-box type and the twin-truss type. The twin-truss type is more commonly used worldwide while the single-box type is a special design. The single-box system is generally more efficient and lighter in weight, and is perfect for erecting pre-cast beams on tight horizontal alignments as well as for lifting beams from the sides of the bridge.

Applications:

This beam launcher has been widely used in highway and railway bridge projects to install T-beam, I-beam and box beams of 30m to 55m spans and 60t to 250t weight.



JiB Crane

The Jib Crane is a type of crane that uses a mounted arm to lift, move and lower material. The arm, mounted either perpendicular to or an acute angle upwards from a column(pillar), may rotate along its central axis through a limited arc or a full circle. A column mounted jib crane is often used in industrial settings, like warehouses, to load and unload material.

Free Standing column Jib Crane

This kind of crane is developed in recent years, small and medium-size lifting equipment, safe, reliable, high efficiency, energy-saving, time-saving and labor-saving and flexible feather, in the three-dimensional space and can operate freely, especially in the short, intensive lifting showing the occasion better than any other conventional lifting equipment unique advantages, widely used in workshops, warehouses, terminals and other fixed location.

Wall Mounted Jib Crane

These mount easily to any substantial structural steel building column, at any desired height. The crane has a structural steel finish, in highly visible yellow enamel.

Wall Travelling Jib Crane

These are useful where overhead cranes are not practical or feasible. They offer 360 degree floor coverage, allowing unrestricted placement of machinery and equipment.

Lifting capacity (ton)		0.5, 1, 2, 3		5	
Span (m)		3-16		3-16	
Crane Travelling Device	Travelling speed (m/min)	20	30	20	30
	Reducer ratio	28.2	20	30.4	21.6
	Motor	ZDY21-4, 2x0.4Kw, 1380r/min		ZDY112-4, 2x0.8kw, 1380r/min	
Lifting device (Electric hoist) And hoist travelling device	Electric Hoist model	CD1/ MD1			
	Lifting speed (m/min)	8, 0.8/8			
	Lifting height (m)	6, 9, 12, 18, 24, 30			
	Travelling speed (m/min)	20; (30)			
	Motor	Taper Squirrel-cage type			
Work duty		Middle grade, JC=25%			
Power supply		380V, 50Hz, 3-Phase			
Wheel Diameter		130mm	150mm		
Rail Surface width		37- 70mm			



Electric hoist

Wire rope electric hoist has features of compact, light, small-sized shape and smooth operation, which offers outstanding ease use, save labor, and raise work efficiency, our hoist can be used not only on the overhead rails, but also be used in construction with many types of electric or manual cranes such as single-girder crane, double-girder crane, cantilever crane or gantry crane etc. The electric hoist model MD1 with double lifting speeds should be used in case where the hoist model CD1 can't meet the requirements for fine adjustments during precision operations.



Single Speed Electric Hoist

Applications:

It can travel on the fixed H-beam , and also could be suing for single beam overhead crane, gantry crane, jib crane and overhang crane to lift the cargo.

It can be used in factories, mines, wharf, warehouse, freight yards, and shops and so on which need lifting equipment for lifting heavy objects. Such as mining companies and railways, docks, warehouses.

Model		CD1/MD1									
Capacity (t)		0.25	0.5	1	2	3	5	10	16	20	
Height (m)		3 - 9	3 - 9	6- 30	6- 30	6- 30	6- 30	9- 30	9- 18	9- 18	
Lift speed(m/min)		8, 0.8/8						7, 0.7/7	3.5, 0.35/3.5	4	
Travel speed(m/min)		20	20/30						20	20	
Wire Rope	Dia. (mm)	3.6	4.8	7.7	11	11	15	15	17.5	24	
	Structure	6x 19		6 x 37 + 1							
Travel rail		16-22b	16-28b	16-28b	20a-32c	20a-32c	25a-45c	32b-63c	45b-63c	56b-63c	
Lift motor	Power (kw)	0.4	0.8, 0.2/0.8	1.5, 0.2/1.5	3.0, 0.4/3.0	4.5, 0.4/4.5	7.5, 0.8/7.5	13, 1.5/13	13, 1.5/13	18.5	
	Rotation	1380r/min									
Travel motor	Power (kw)	0.06	0.2	0.2	0.4	0.4	0.8	0.8x2			
	Rotation	1400r/min	1380r/min								
Joint number (times)		120									
Work duty		Middle FC= 25%									
Power		380V, 50Hz, 3-Phase									
Weight (kg)	CD1	44-46	121-130	137-220	221-353	281-450	440-726	1050-1450	1130-1286	//	
	MD1	//	138-147	164-247	256-388	310-480	530-780	1100-1500	1220-1376	//	

Electric hoist list

1. CD1 Model Single Speed Wire Rope Electric Hoist
2. MD1 Model Dual Speed Wire Rope Electric Hoist
3. Low Headroom Wire Rope Electric Hoist
4. Euro Type Wire Rope Electric Hoist
5. Explosion Type Wire Rope Electric Hoist
6. Electric Chain Hoist



Low head room electric hoist



Low head room electric hoist



Dual Speed Electric Hoist



Euro Type Electric Hoist



Explosion Type Electric Hoist



Low Clearance Hoist



Electric Chain Hoist

Single speed wire rope electric hoist

Cd1 electric hoist has only normal speed, which can satisfy the general working, But if you lift the precision instrument, it is belong precise working, Then MD Model electric hoist is better chose, it have two motors, one for high speed and another is low speed.

Capacity: 1ton,2ton,3ton,5ton,10ton,16ton,20ton

Lifting height:3-36m



Electric chain hoist

Electric chain hoist Description:

- shell: Light aluminum alloy shell shall be adopted, which is light but hard and fit for the use in terrible work environment with a high heat dissipation rate and all tightness design.
- Inverse phase sequence protecting device: It is the special electrical installation which controls the circuit not to work in case of wiring error in the power supply.
- Limit switch: The limit switch device is installed where the weight is lifted on and off to make the motor to stop automatically so as to prohibit the chains from exceeding for safety.
- 24v/36v device: It is used to prohibit the emergencies from occurring in case of the leakage in the switch.
- Side magnetic braking device: The device shall realize the instant brake in case of the power dump.
- Chain bag: It shall be light, handsome and durable.
- Chain: The chain shall adopt the imported FEC G80 ultra heat-treatable aluminum alloy chain.

Electric chain hoist is a new style and small lifting equipment as well as a perfect equipment for lifting, transmission. Electric chain hoist has the traits of reasonable design, advanced structure, remarkable frame, small volume, perfect appearance, big tenacity, easy maintenance and durable etc. Electric chain hoist is widely used in factories, warehouse, workshop, harbour, docks, especially in raising working efficiency and improving working condition.



Wireless remote control for single speed.

Wireless remote control for dual speed.

Chain bag

Pulley sheaves

A steel pulley sheave is coveted in industries where strict weight limits are in place, such as on boats. The reason for this unique benefit is because steel is much lighter than iron. However, a sheave pulley block forged from steel cannot handle as much weight and stress as an iron sheave.

Machine steel pulley sheaves are popular with industries that demand strong communication between workers. This stamped metal wheel provides a combination of strength and silence when it is in operation. This material makes it possible for silent operation when verbal commands are most important.

A pulley sheave has many specifications that can be customized for a particular job. Based on these factors, it can be used in a variety of industries. Users must consider how frequently the sheaves will be used, as well as what the weight load will be. Sheave height and width also are considerations that directly influence performance, because smaller wheels operate faster but usually cannot carry the same load. The pulling radius, cable diameter and maximum tension for the cable are other considerations that go into choosing the perfect sheave for a job.



Crane wheels

These wheel assembly are technically advanced and successfully used in different industries like (Steel Plant, Rolling Mill, Cement Plant, Fertilizer Plant, Paper Mill, Chemical Industries etc.) Forged Steel Crane Wheels are available in a wide range of standard sizes. In addition, crane wheels to meet your special design requirements can be produced in virtually any size, configuration and surface finish condition. We maintain a large inventory of carbon and alloy steels to meet your specific needs.

Forged Crane Wheels are available in any surface hardness up to 60 Rc including our standard heat treatments. In order to improve strength and wear-resistant surface of the wheel life, tread surface heat treatment should be to require the surface hardness of HB300-380.

Wheel Material:

ZG430-640 cast steel, 60#, 65 #, 65Mn, 42CrMo, 45# or according to your demand.

Standard:

GB, JIS, AISI, SAE, ASTM/ASME, EN, DIN.



Brief introduction:

Crane Hook is one of the most suitable slings in hoisting. It is connected with pulleys to hang on the wire rope of lifting mechanism. And the hook is the most widely usage when lifting cargos. It is made easily and operated practically. Hooks can be classified into single hook and double hooks according to the appearance; forged hooks and strapped hooks according to production method.

Specifications

Crane hook with blocks Capacity: 0.5t- 500t Single/ double hook Materials: DG20

Crane hook with blocks

strength grade: M, P, S, T, V grade

Materials:

M grade with DG20, or DG20Mn

P grade with DG20Mn

S grade with DG34CrMo

T grade below 40t with DG34CrMo, more than 40t with DG34CrNiMo or DG30Cr2Ni2Mo

V grade below 40t with DG34CrNiMo or DG30Cr2Ni2Mo, more than 40t with DG30Cr2Ni2Mo.

Hook capacity selection standard

Strength grade	Working Grade of the mechanism(GB3811)									
					M3	M4	M5	M6	M7	M8
M										
P				M3	M4	M5	M6	M7	M8	
S			M3	M4	M5	M6	M7	M8		
T		M3	M4	M5	M6	M7				
V	M3	M4	M5	M6	M7					
Hook No.	Capacity (ton)									
1		4	3.2	2.5	2	1.6	1.25	1	0.8	0.63
1.6		6.3	5	4	3.2	2.5	2	1.6	1.25	1
2.5		10	8	6.3	5	4	3.2	2.5	2	1.6
4	5	16	12.5	10	8	6.3	5	4	3.2	2.5
5	8	20	16	12.5	10	8	6.3	5	4	3.2
6	12.5	25	20	16	12.5	10	8	6.3	5	4
8	20	32	25	20	16	12.5	10	8	6.3	5
10	25	40	32	25	20	16	12.5	10	8	6.3
12	32	50	40	32	25	20	16	12.5	10	8
16	40	63	50	40	32	25	20	16	12.5	10
20	50	80	63	50	40	32	25	20	16	12.5
25	63	100	80	63	50	40	32	25	20	16
32	80	125	100	80	63	50	40	32	25	20
40	100	160	125	100	80	63	50	40	32	25
50	125	200	160	125	100	80	63	50	40	32
63	160	250	200	160	125	100	80	63	50	40
80	200	320	250	200	160	125	100	80	63	50
100	250	400	320	250	200	160	125	100	80	63
125	320	500	400	320	250	200	160	125	100	80
160	400		500	400	320	250	200	160	125	100
200	500			500	400	320	250	200	160	125
250					500	400	320	250	200	160



Crane drum

Crane drum is the component to wind wire rope in the lifting mechanism. Crane drum consists of drum shaft, flange type annular gear, drum hub, bearings, bearing pedestal.

When one end of drum is equipped with the switch of rotary type position limitation limiter, it must ensure to make drum shaft and rising limit switch rotate synchronously.



Cast iron type crane drum

- The material of this kind of crane drum is cast iron HT200.
- Cast iron type crane drum is more prevalent than the other two as follows.
- Centrifugal casting is used in the process of production.
- The wire rope can be better protected owing to the material of cast iron.

Cast steel type crane drum

- The material of this kind of crane drum is cast steel.
- It is rarer than cast iron type and steel plate crane drum because of the lower cast ability.
- Centrifugal casting is used in the process of production.

Steel plate type crane drum

- The material of this kind of crane drum is steel plate, Q235, Q345.
- It is more common than cast steel type crane drum.
- Welding is used in the production process of steel plate type crane drum.
- It is easy and convenient to produce.

NO.	Specification	Lifting capacity(t)	pulley ratio	screw pitch	lifting height(m)	weight(kg)
1	φ300×1000	3.2	2	14	12	264
2	φ300×1500	3.2	2	14	18	342
3	φ400×1000	5	2	16	16	334
4	φ400×1500	10	3	16	16	454
5	φ500×1500	16	3	20	16	753
6	φ500×1500	20	4	20	12	753
7	φ650×2000	32	4	24	16	1500
8	φ800×2000	50	5	28	12	2534
9	φ800×4000	75	5	32	20	3390
10	φ1000×4000	100	6	36	20	6070



Transfer carts

Transfer carts are used: to carry loads along assembly lines; transfer material from one work station to the next; store and transport an entire shift worth of production. They can even be used as a stable yet moveable machine base.

Classification:

- KPT type is powered by the cable laid on the ground directly. For its simple structure, the price is more competitive. While the distance is often limited in 100 meter.
- KPJ type is powered by the cable from the cable reel. With the cable reel, the moving distance is improved to 200 meter compared with the KPT type.
- KPX type is powered by the storage battery. Without the cable, this kind of transfer cart is more flexible and safe. While the capacity and the duty group are all affected by the storage battery. Especially, the price and the life span of the battery is also an important issue.
- KPC type is powered by the slide wire along the rail, so the moving distance is unlimited. The slide wire is the key point and also the weakest link.
- KPD/PKDZ type is powered by the low voltage DC power from the rail. Powered by the rail, the system is more reliable compared with the KPC type; the system is also more complicated and expensive.
- Manual Transfer Cart: Manual transfer carts can be pushed or pulled by operators over smooth or semi-smooth floors. They are easily maneuvered without a fork lift. These rugged manual carts are versatile and can be easily customized to suit your application



ProductName	Model No.	Power Supply Mode	Load Capacity	Other Items	Usage
Rail Transfer Cart	KPD	Conductor Rail	Load range 1-300ton, can be customized per client demand	Running distance	Ordinary goods, such as steel plate, workpiece, equipment etc special goods, such as coil, column, ladle etc
Battery Powered Transfer Car	KPX	Battery		Using frequency	
Motorized Transfer Trolley	KPJ	Cable Drum		Running distance	
Busbar Powered Handling Cart	KPC	Busbar		Working shop	
Towed Rail Trailer	KP	Tractor	1-100t	Working shop	
Steerable Towed Car	BWT	Tractor	Load range 1 -50t, less than 20t, cement floor is ok. More than 20t, steel floor is demanded.	Working environment	
Trackless Handling Machine	BWP	Battery		Working path	



Rail Transfer Cart



Rotate Transfer Cart



Towed Rail Trailer



Battery Powered Transfer Car



Motorized Transfer Trolley

Grab bucket

Grab bucket is the bucket that can open and close to grasp the sediment and all kinds of bulk cargo. It is a kind of spreader that mainly rely on the left and right two combined bucket or multiple jaw opening crawl and unloading bulk material.

Clamshell grab bucket: It is composed of two full buckets and widely used for port, dock, station freight yard, mines etc site to loading all kinds of bulk cargo, minerals, coal, sand, stone and so on, can also be used for rock excavation, foundation trench excavation, and highway construction, track laying engineering etc.

Multivalve grab bucket: It is composed of three or more than three jaw plate and applicable to all kinds of harsh environment efficient iron scrap engaged in large block materials and rubbish loading and unloading, has widely used in the ports, railway, metallurgy, mining, building etc, its structure is divided into single cable, double cable, four cable, electric, four types. Multiple jaw can respectively closed according to the material's shape and size, multiple jaw quantity can be according to grab materials and users need to design four disc to eight disc.

Mechanical grab bucket: Mechanical grab bucket itself has no open and close structure, it usually made of rope or link the external driving force, according to the operating characteristics can be divided into the single rope grab, double rope grab and four rope grab, the most commonly used is the double rope grab.

Single rope grab is suitable for all kinds of cranes only a hoisting drum, the opening and closing of novel structure, loading and unloading material freely open and close, the use and convenient for hanging, suitable water landing operation to capture. Double rope grab is suitable for double lifting device structure of all types of cranes, grab the loose deposits. Reliable work, convenient operation, high productivity, wide application, use and port, wharf, highway and bridge construction industry. They become the four rope grab with two sets of double rope, the working process and the double rope grab the same.

Hydraulic grab bucket: Hydraulic grab bucket is a working device by hydraulic power source to provide power for the hydraulic cylinder, to drive the left and right two combined buckets or multiple jaw plate grab and unloading bulk material. The hydraulic grab itself is fitted with open and close structure.

The product structure is compact, beautiful modeling, save energy and easy operation, grasping force big and high automation. It is the ideal loading and unloading tools for large mineral, pig iron, scrap steel, garbage, iron powder, straw, slag and other materials. It is mainly suitable for the steel, mining, forestry, mining, port terminals, garbage disposal, biomass power generation industry.



Double Rope Grab



Electric motor grab



Four rope grab



Paina Grab



Electric hydraulic double disc grab

Production Machinery



P&C Lab



elemental analysis



resistance furnace



mechanical properties testing machine



wheel nc quenching machine tool



Electric hoist control system test platform



Yq31315 gear hobbing machine



HCTx6511



ck61315 CNC heavy-duty horizontal lathe



shot blasting machine



NC cutting machine



chemical analysis



Automatic welding robot



Lathe



Sheet metal cutting machines

Production Machinery



vertical lathe



Tie-in and weld



structure shop



slotting machine



shot blasting



Sheet metal cutting machines



machining shop



Plasma cutting equipment



punching machine



Digging machine



Floor Type Boring-milling Machine



1250tpunching machine



boring mill

Exporting performance

Hongkong - 10 ton single girder gantry crane



Ukraine low headroom single girder gantry crane



Saudi Arabia Single girder overhead crane project

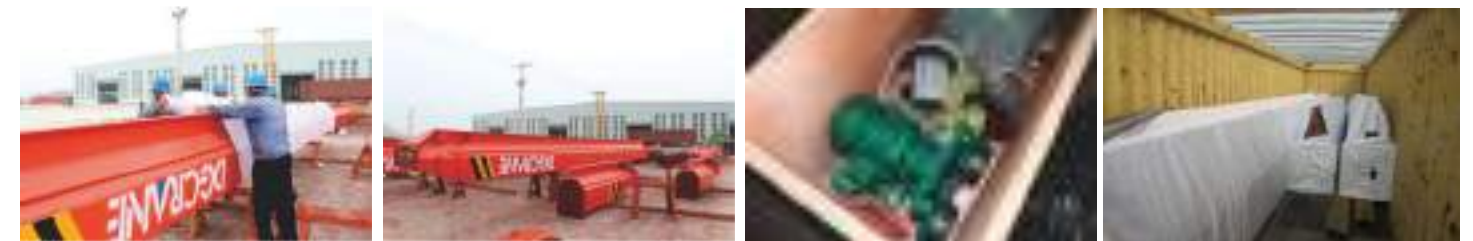


10sets 80t and 1 set 120t double girder overhead crane export to Indonesia



Exporting performance

Libya single girder overhead crane project



Argentina Single Girder Gantry Crane With Low Clearance Hoist Trolley



Peru wall mounted jib cranes project



Crane-parts



Crane installation in customer's factory

10 sets 80 ton and 1 set 120 ton double overhead crane installed in Indonesia



10t gantry crane running in Argentina



10 ton gantry crane in Qatar



10 ton gantry crane running in Ukraine



2sets 10ton HD overhead crane in Tanzania



2 ton wall jib crane, 5t gantry crane in Peru



HD 5 ton overhead crane to Saudi Arabia



150t double girder gantry crane installed in Kazakhstan



factory visit



factory visit

